

## Mrs. Bugfree, Inc. "Quality Service You Can Recommend"

**Publisher:** Mrs. Bugfree, Inc. **Volume No.:** 4 **Issue:** Fall/Winter **Date:** Oct/Nov/Dec  
**1-800-742-8437** **Visit us online at:** [www.mrsbugfreeinc.com](http://www.mrsbugfreeinc.com)



### Seasons Change...

During the winter season you will notice a change in our application technique. Winter conditions here

in the Bay Area require our field technicians to focus more on the perimeter of your home to establish an effective barrier that protects you and your family. This season, we will be granulating the yard and emphasis will be around the structure of your home. The areas of concentration are:

- ❖ Perimeter of the home
- ❖ Eaves
- ❖ Window Seals & Door Frames
- ❖ Foundation
- ❖ Dormant Fruit Tree Spraying

We will also be using an Environmentally Friendly product which is a blend of plant oils and botanical scents.

### Sleep Tight...

### Don't Let The

### BED BUGS BITE!!



With the bed bug infestations on the rise in the Bay Area here are some helpful tips to avoid an infestation: Bed bugs are successful hitchhikers. They make their way from an infested location to furniture, clothing, bedding, baggage and boxes.

- Check secondhand furniture, couches, beds, and clothing before bringing them home.
- Use encasements for mattresses and box springs, making sure they are tear resistant and to check regularly for holes.
- Reduce clutter in your home to reduce hiding areas.
- When traveling:
  - Hotels-use luggage racks, rather than setting on bed or floor.
  - Check the mattress and bedding.
  - Returning home-unpack directly into washing machine and inspect luggage thoroughly.

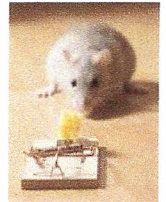
### Did you know we provide the following:

- **Rodent Control**
  - Rat*: Exclusion-sealing up entry points and setting of snap traps
  - Mice*: Setting of tamper proof bait stations
- **Tree Spraying**
  - Oaks* (Mar.-Apr.) Prevent oak moths from damaging tree
  - Olive* (Feb.-Mar.) Pre-emergent treatment to prevent fruit from bearing on tree causing stains.
  - Sycamore/Ash* (Mar-Apr) Control fungi disease & anthracnose from damaging leaves and twigs
- **Weed Control** (Dec.-Feb.)
  - Pre-emergent/Post-emergent control.



### Rodent Inspections

Now that fall is in progress and winter is just around the corner, here comes the cold weather! To avoid those unwanted pests make sure you are on one of our maintenance programs, especially if you want to do without those nasty rodents!!



Customers on our maintenance program can receive a **FREE** rodent inspection. Don't let your home become a refuge for rodents! Ask about our **FREE** rodent inspection today!

## Happy Holidays!!!

From our family to yours, wishing you and your family a safe and Happy Holiday Season!!!

